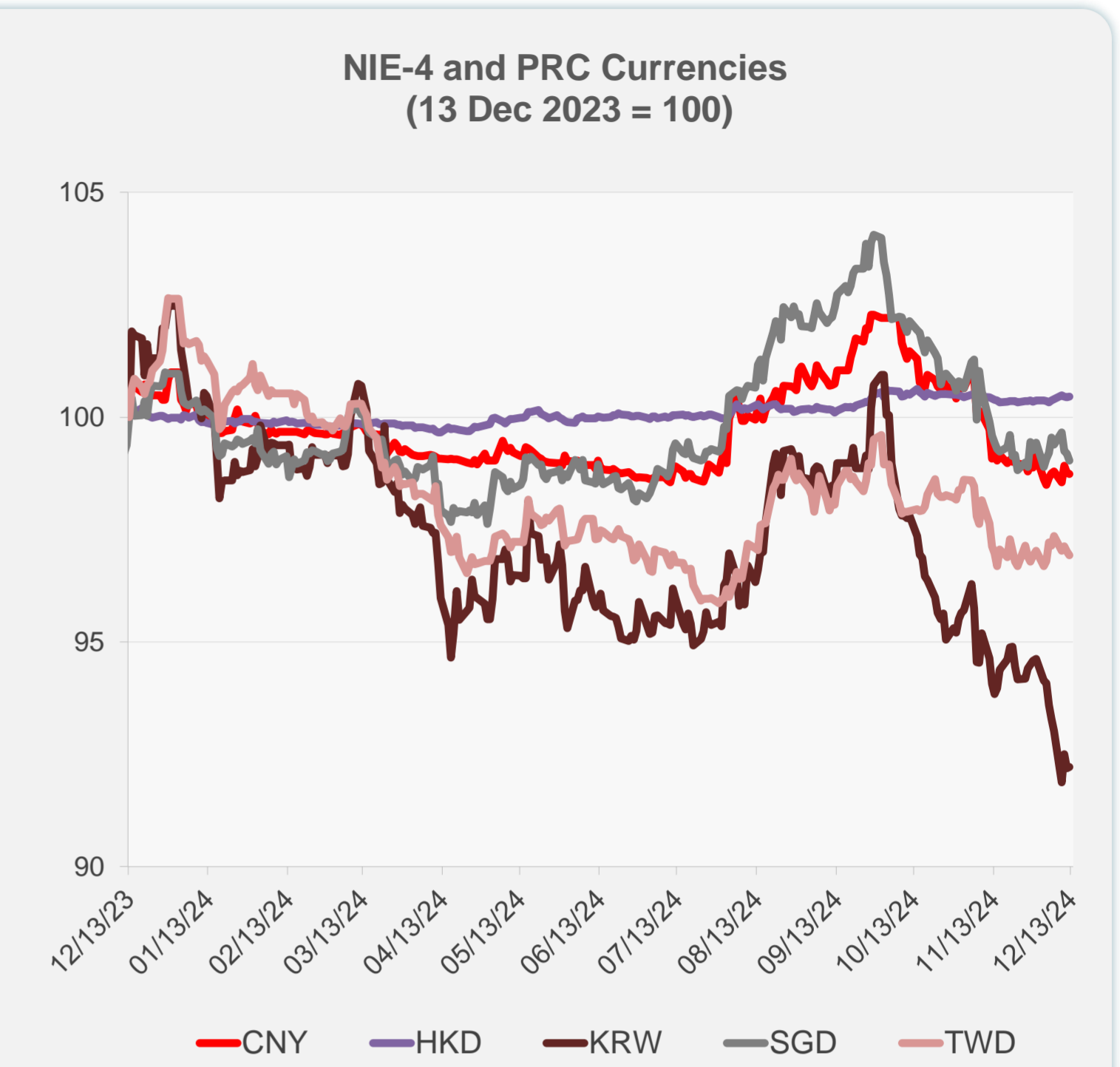
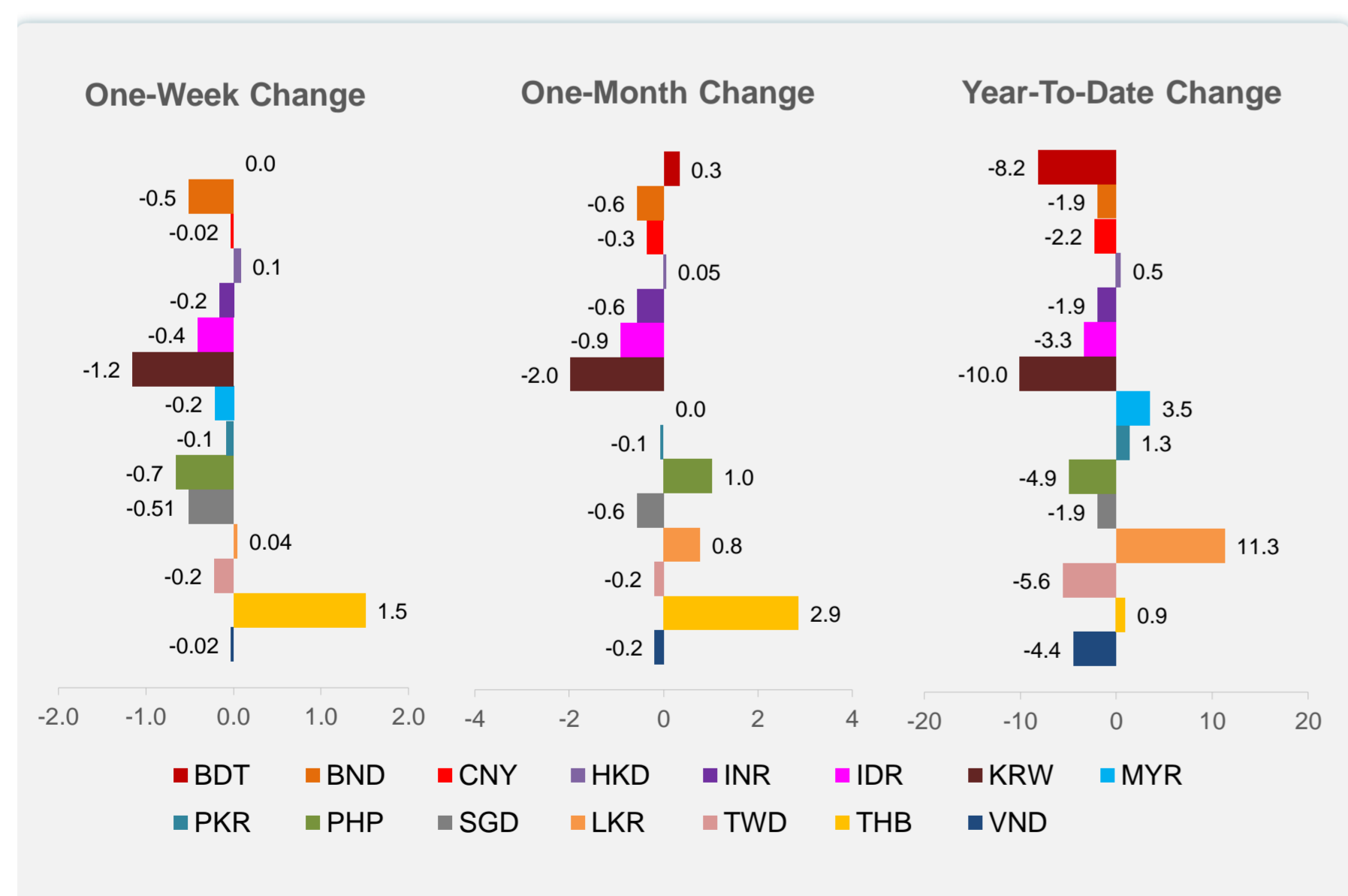
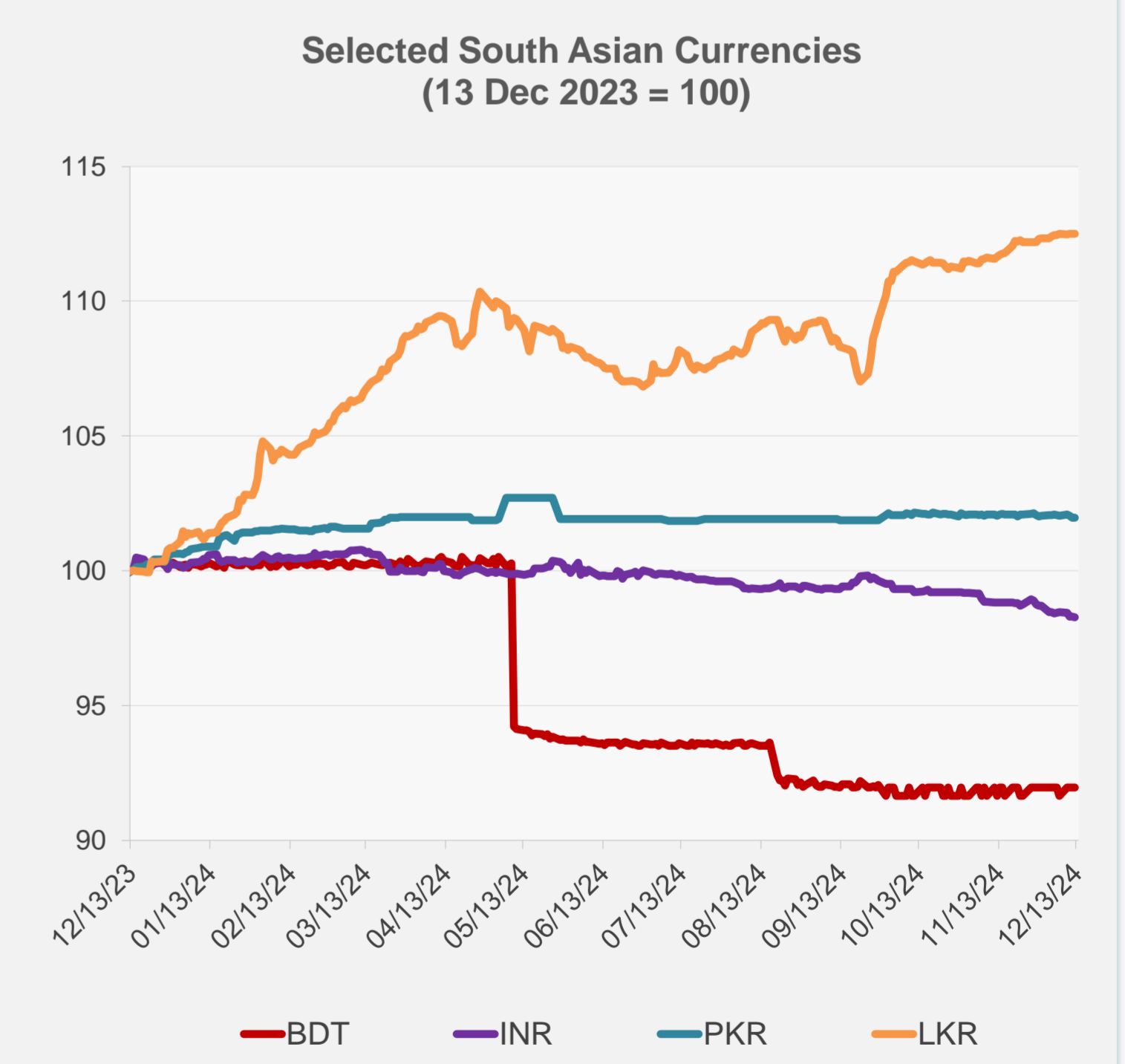
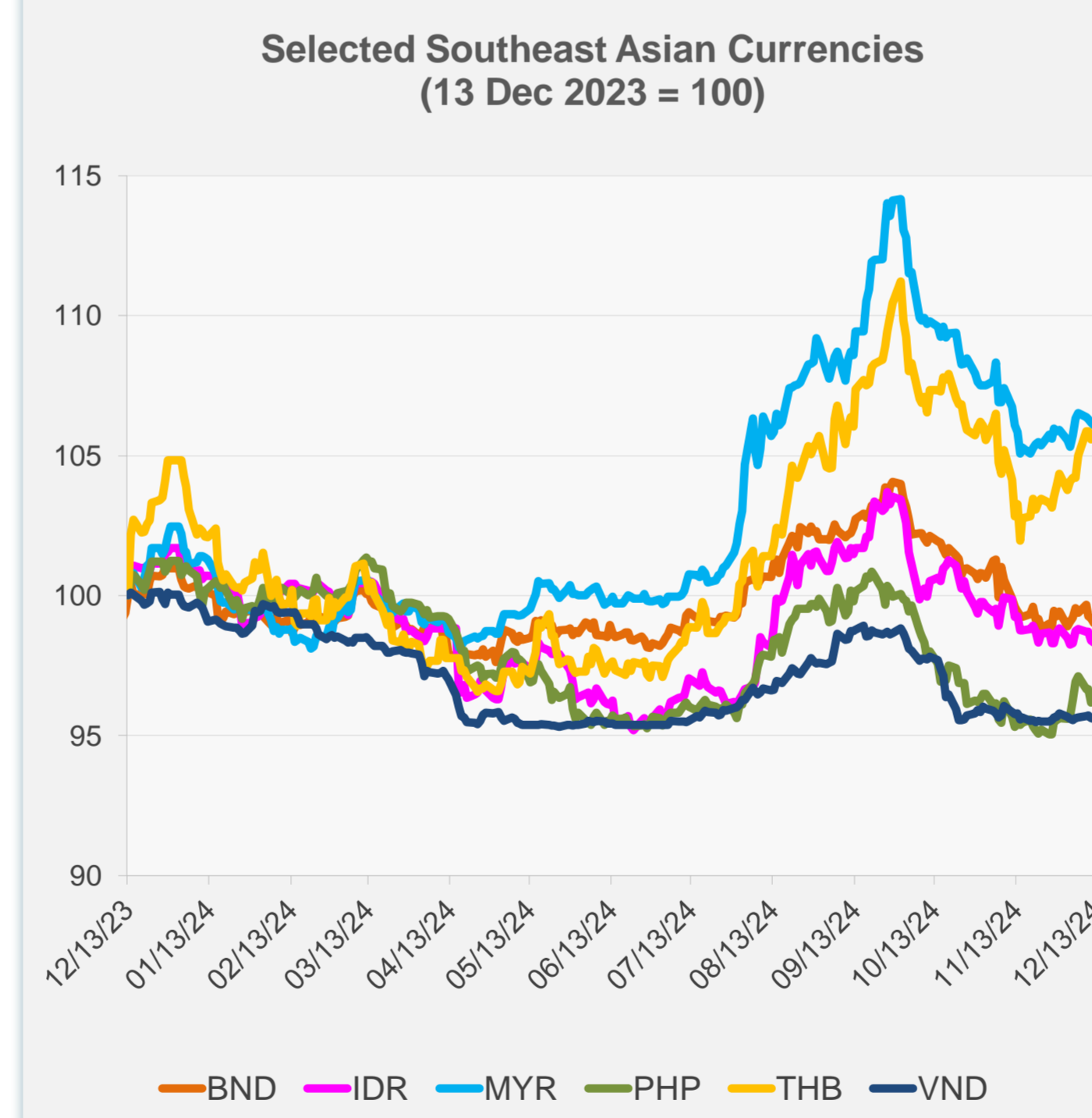


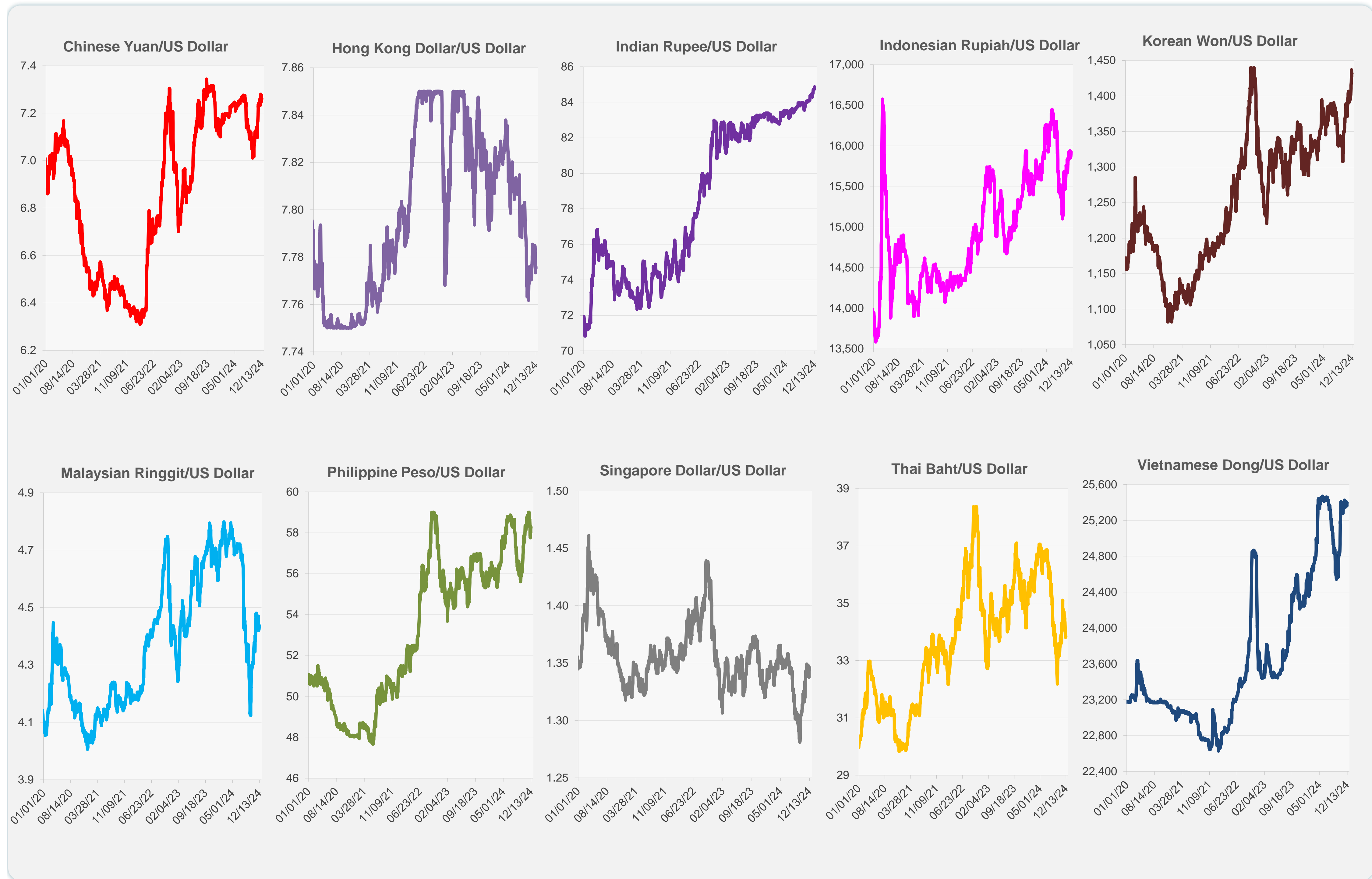
	Latest Closing	% change from Previous Day	% change from 01-Jan-24
Euro	0.95	-0.16	-5.18
Japanese yen (JPY)	152.31	0.11	-7.50
Bangladeshi taka (BDT)	119.50	0.00	-8.16
Brunei dollar (BND)	1.35	-0.16	-1.92
Chinese yuan (CNY)	7.26	-0.04	-2.24
Hong Kong dollar (HKD)	7.78	0.01	0.47
Indian rupee (INR)	84.87	-0.03	-1.92
Indonesian rupiah (IDR)	15,925.00	-0.06	-3.32
Korean won (KRW)	1,431.50	0.03	-10.02
Malaysian ringgit (MYR)	4.44	-0.09	3.54
Pakistan rupee (PKR)	278.13	0.01	1.33
Philippine peso (PHP)	58.25	0.11	-4.91
Singapore dollar (SGD)	1.35	-0.16	-1.92
Sri Lanka rupee (LKR)	290.18	0.01	11.30
Taipei,China NT dollar (TWD)	32.52	-0.09	-5.56
Thai baht (THB)	33.84	0.19	0.90
Vietnamese dong (VND)	25,396.00	-0.02	-4.45



NIE = Newly Industrialized Economies



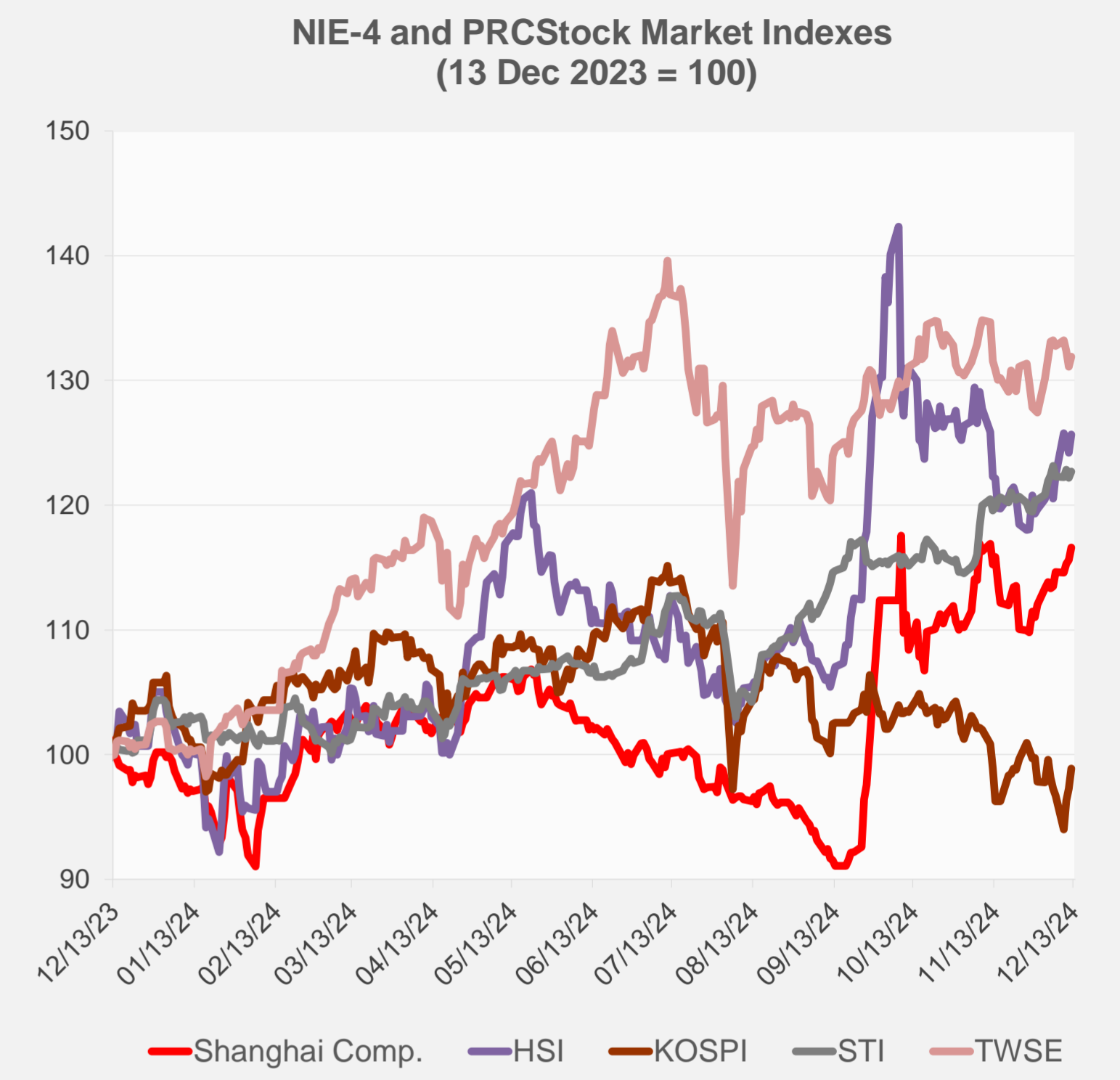
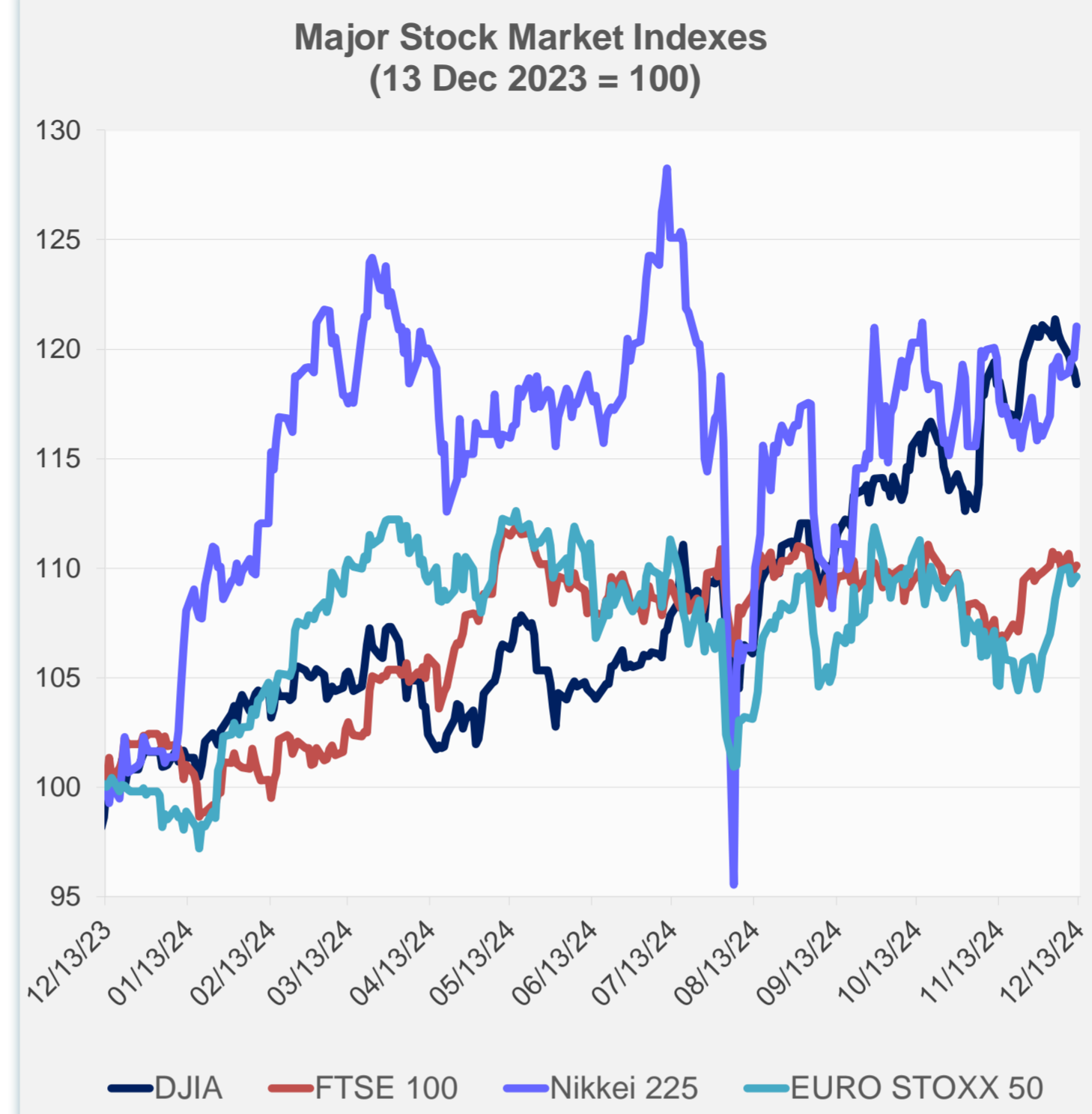
Note: Negative/Decreasing values indicate depreciation of local currency, and positive/increasing values indicate appreciation.
Source: ADB calculations using data from Haver Analytics.



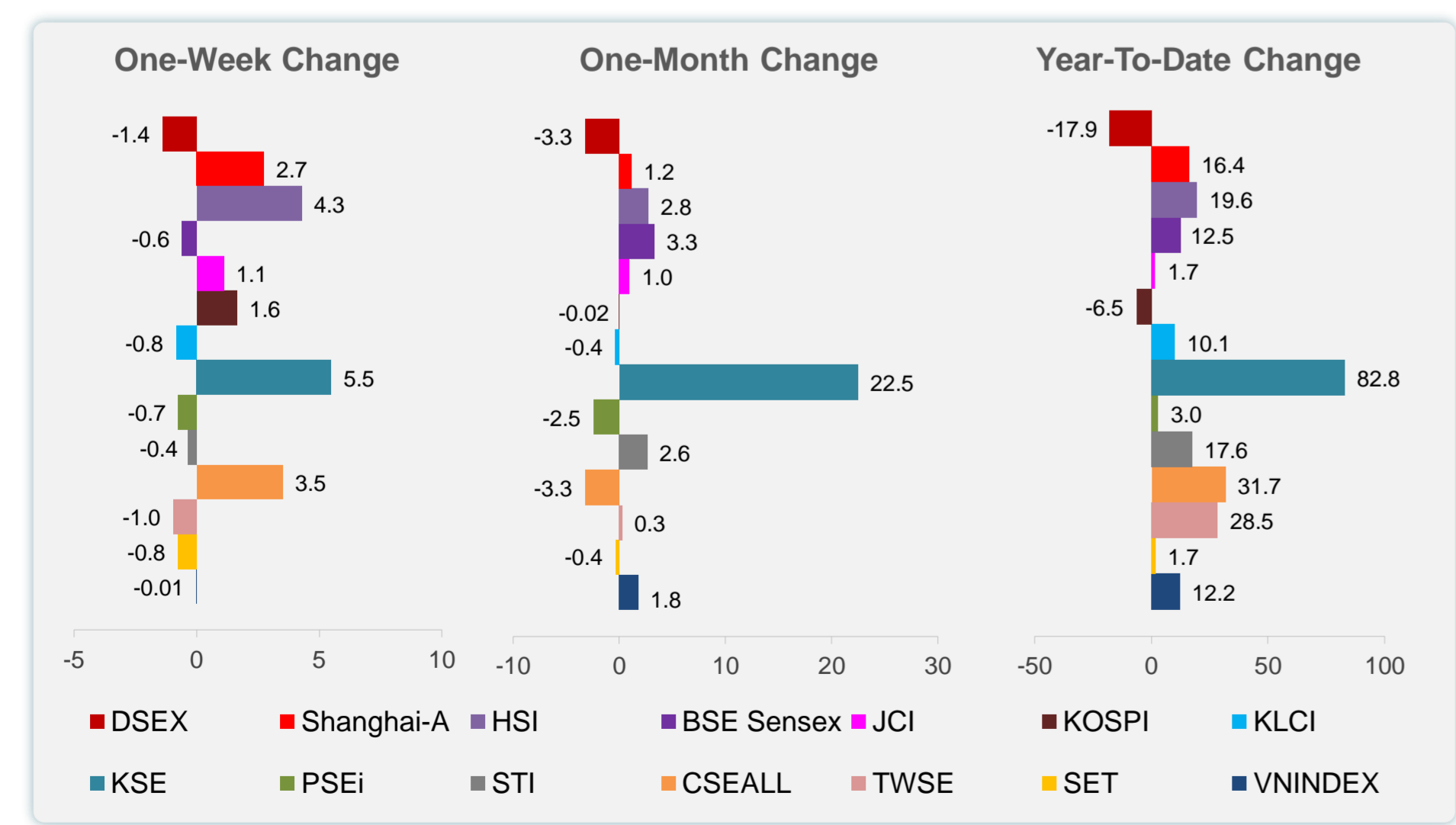
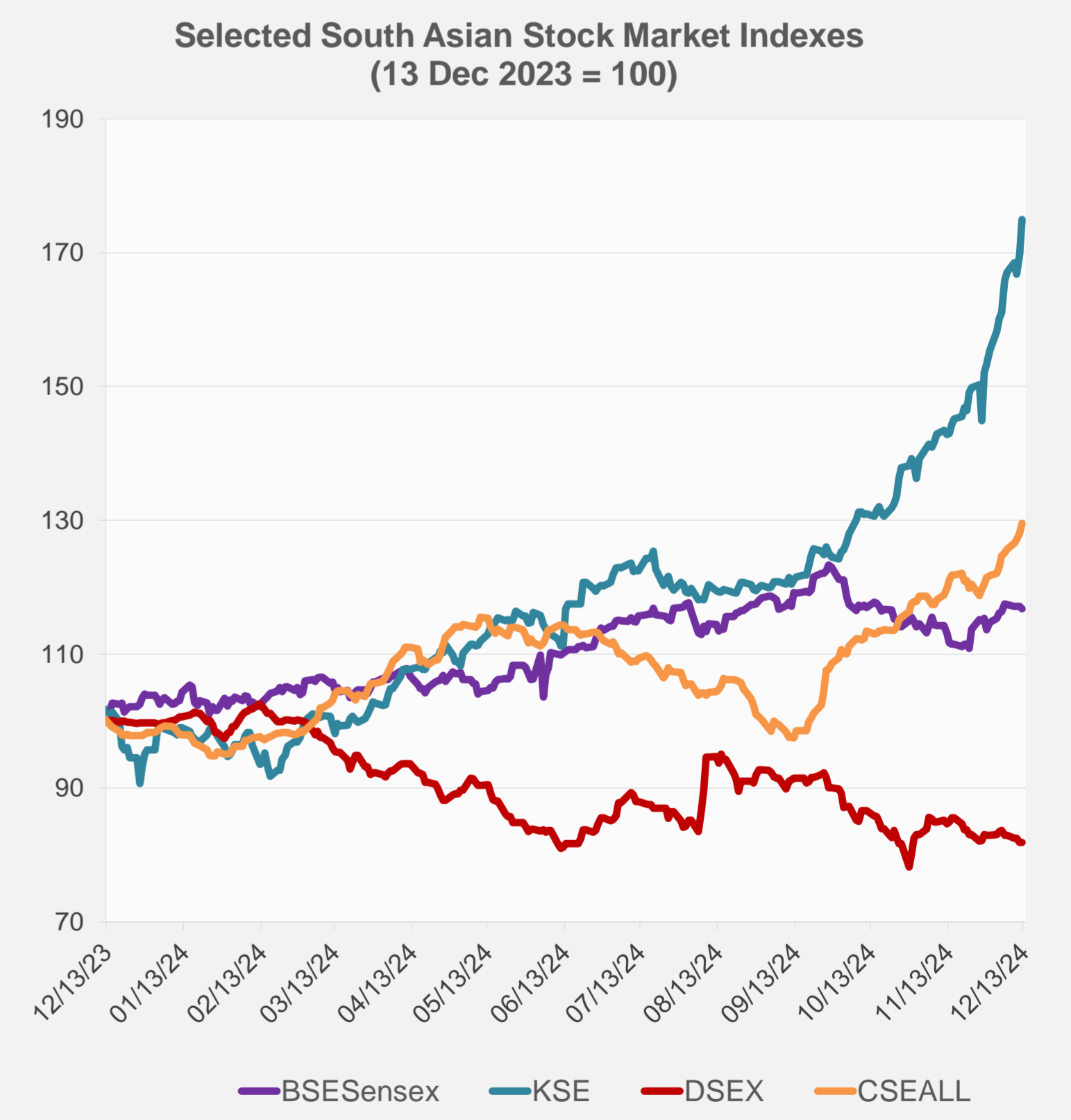
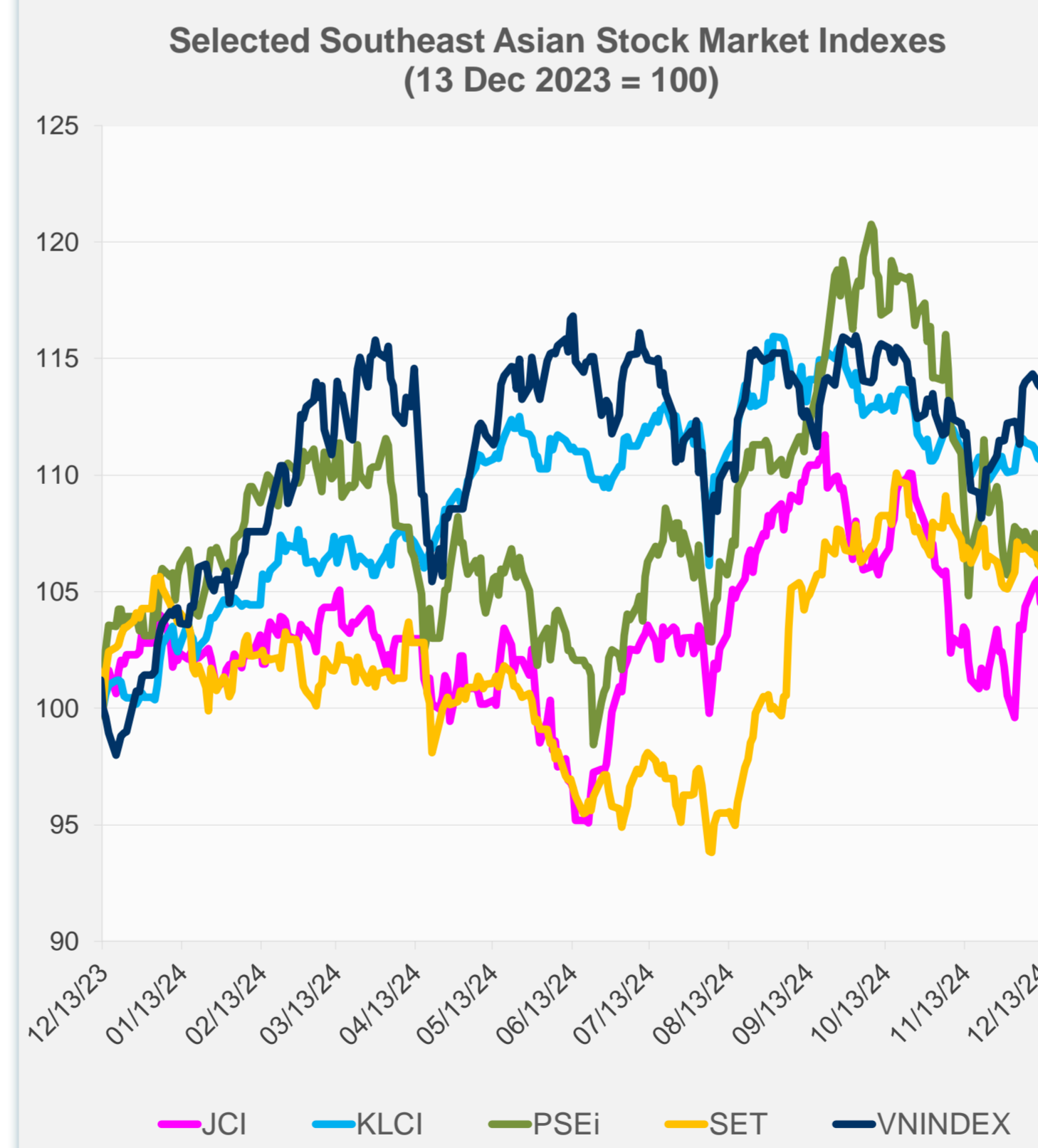
Source: Haver Analytics.

Daily Market Watch
STOCK INDEXES

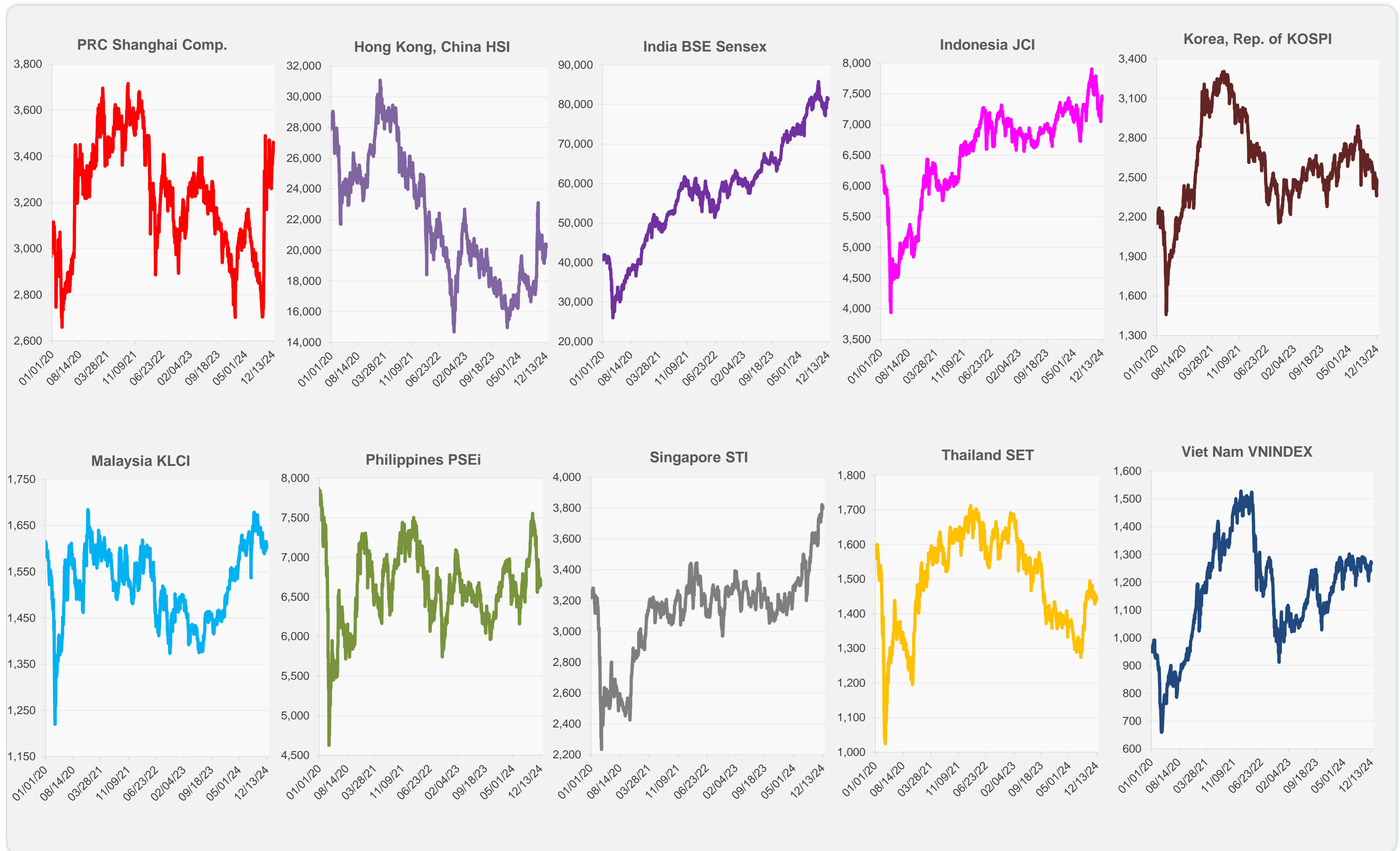
	Latest Closing	% change from Previous Day	% change from 01-Jan-24
US Dow Jones Ind Avg	43,914.12	-0.53	16.52
US NASDAQ	19,902.84	-0.66	32.59
US S&P 500	6,051.25	-0.54	26.87
UK FTSE 100	8,311.76	0.12	7.48
EURO STOXX 50	4,965.53	0.12	9.82
Japan NIKKEI 225	39,849.14	1.21	19.08
Bangladesh DSEX	5,124.50	0.00	-17.91
PRC Shanghai Comp.	3,461.50	0.85	16.36
Hong Kong, China HSI	20,397.05	1.20	19.65
India BSE Sensex	81,289.96	-0.29	12.48
Indonesia JCI	7,394.24	-0.94	1.67
Korea, Rep. of KOSPI	2,482.12	1.62	-6.52
Malaysia KLCI	1,602.08	-0.07	10.13
Pakistan KSE 100	114,180.50	3.04	82.83
Philippines PSEi	6,641.35	-0.02	2.97
Singapore STI	3,809.27	0.43	17.56
Sri Lanka CSEALL	14,035.81	1.09	31.74
Taipei, China TWSE	23,046.80	0.63	28.53
Thailand SET	1,439.89	-0.22	1.70
Viet Nam VNINDEX	1,267.35	-0.12	12.16



NIE = Newly Industrialized Economies



Sources: ADB calculations using data from CEIC Data Company and Haver Analytics.



Sources: CEIC Data Company and Haver Analytics.

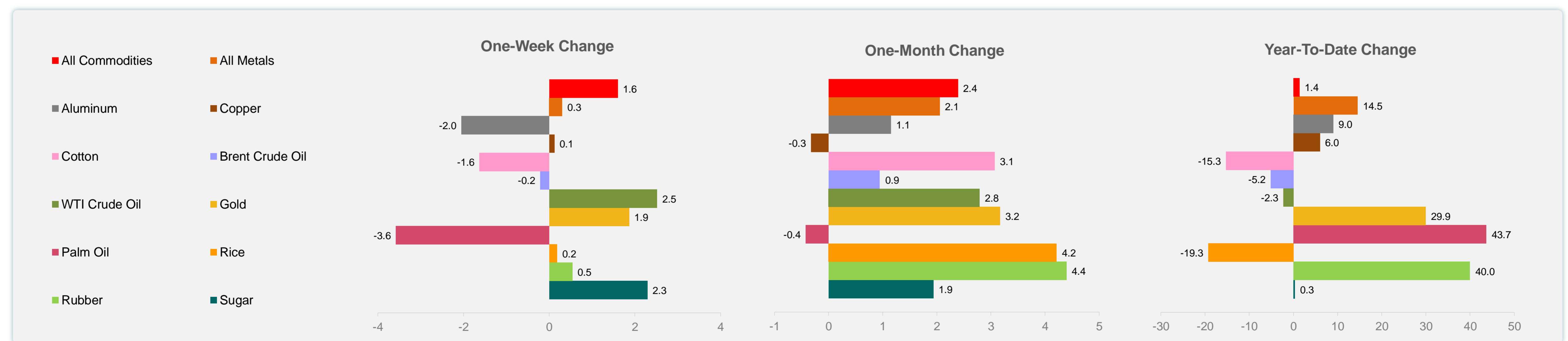
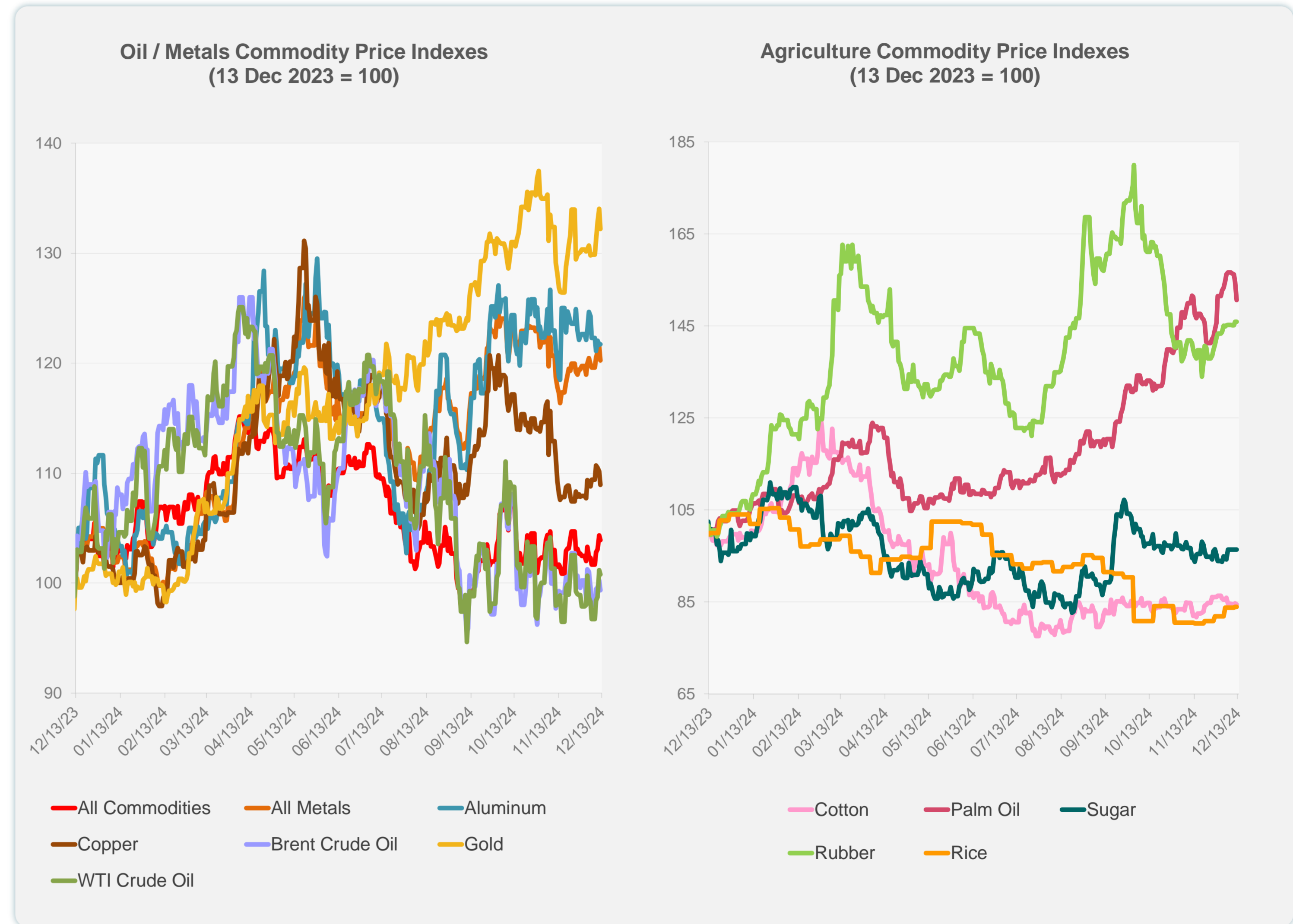
Daily Market Watch
COMMODITY PRICES

13 December 2024, 9:00 AM Manila

	Unit	Latest Closing	% change from Previous Day	% change from 01-Jan-24
S&P All Commodities	US\$	543.17	-0.40	1.41
S&P All Metals	US\$	317.78	-1.05	14.55
Aluminum	US\$/metric ton	2,557.23	0.01	9.03
Copper	US\$/metric ton	8,972.62	-1.12	6.01
Cotton	US cents/lb	66.50	-0.23	-15.29
Brent Crude Oil	US\$/barrel	73.60	-0.87	-5.15
WTI Crude Oil	US\$/barrel	70.02	-0.38	-2.27
Gold	US\$/troy oz	2,680.73	-1.38	29.94
Palm Oil	US\$/metric tonne	1,162.27	-2.57	43.67
Rice ¹	US\$/metric ton	544.00	0.00	-19.29
Rubber ²	US\$/kg	242.30	0.00	39.98
Sugar	US cents/lb	20.54	0.00	0.34

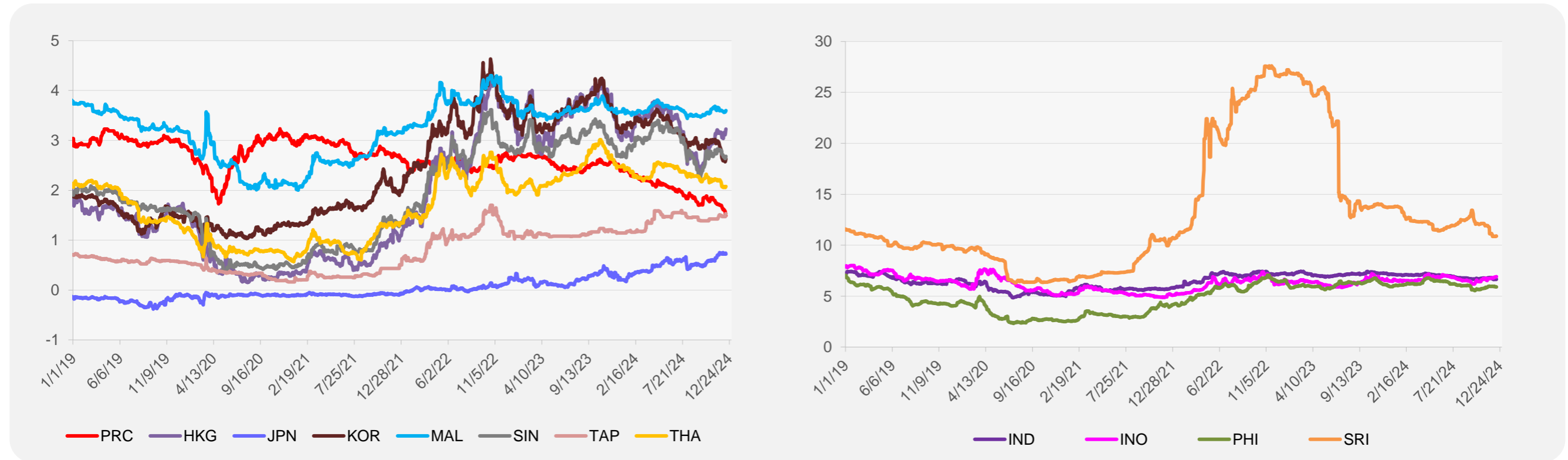
¹ Latest closing price from 12 December 2024.

² Singapore Exchange, Ribbed Smoked Sheet Rubber.

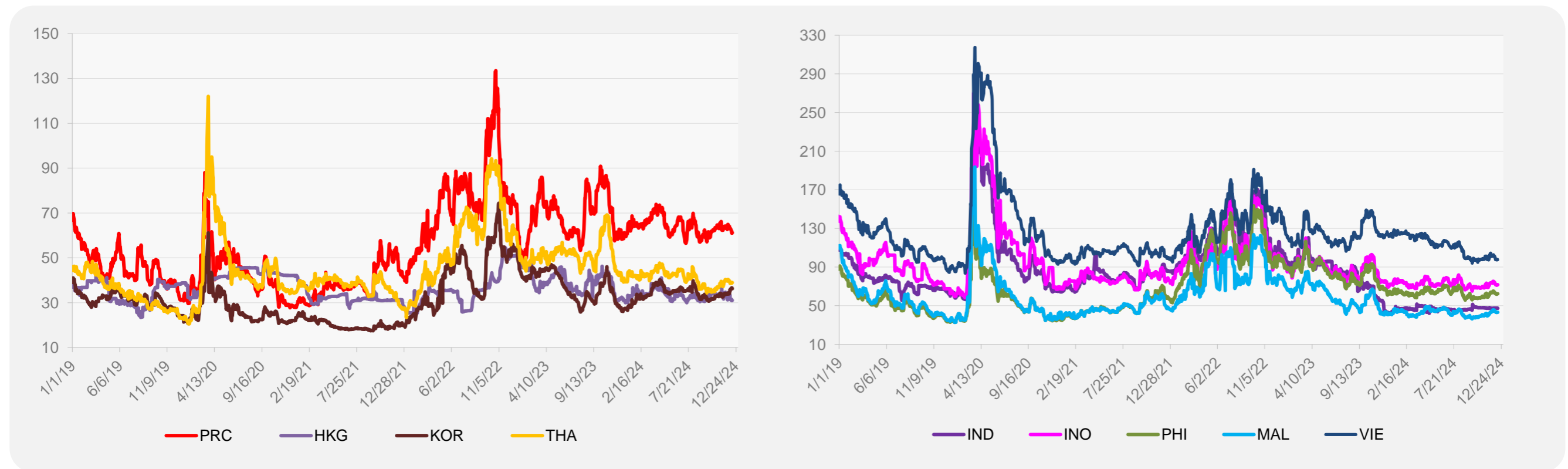


Source: ADB calculations using data from Bloomberg.

5-YEAR LOCAL CURRENCY GOVERNMENT BOND YIELDS (%)



5-YEAR CREDIT DEFAULT SWAP¹



¹ In USD and based on sovereign bonds.
Source: ADB calculations using data from Bloomberg.